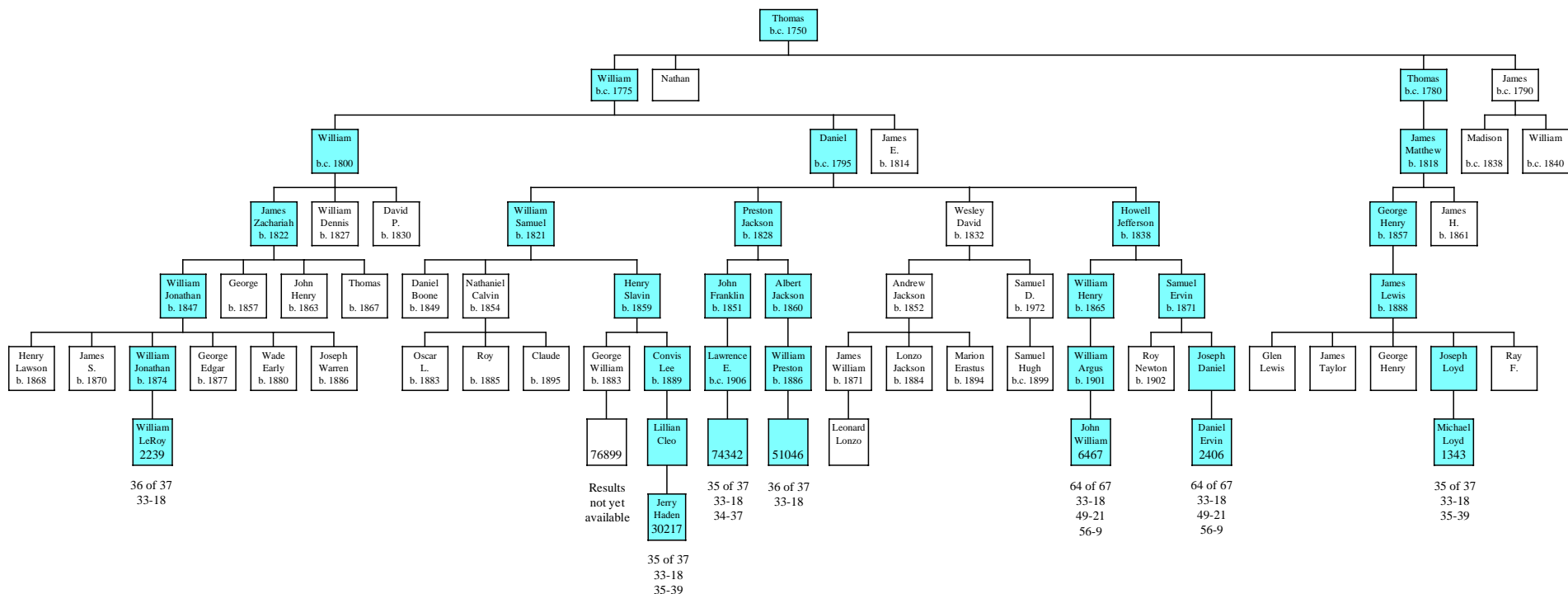


Descendants of Thomas Graves of Lunenburg Co. & Mecklenburg Co., VA (Gen. 152)

(Rev. 7 Dec. 2006)



NOTES: This chart shows male lines of descent only, since the focus is on using Y-DNA analysis to trace the Graves surname. The number in each bottom colored box is the DNA test ID. When two descendants of a common ancestor have exactly the same DNA test results, it is assumed that the common ancestor also had that result, and all boxes up to and including the common ancestor have been given the same color. All boxes with the same color have the same DNA test results. 24 of 25 means that 24 of the 25 markers matched the inferred ancestral haplotype. A notation like 13-19 indicates a mutation from the ancestral haplotype, and means marker 13 had a value of 19. The inferred ancestral haplotype is the series of 37 numbers with no white squares in the large blue area of the master DNA results table.

Additional Y-DNA tests needed to better define this family (please let us know if you can find someone to participate):
 (1) Another descendant of Thomas Graves, b.c. 1780, by a different line, preferably a brother of James Matthew Graves.
 (2) Descendants of Nathan and James Graves, sons of Thomas, b.c. 1750.